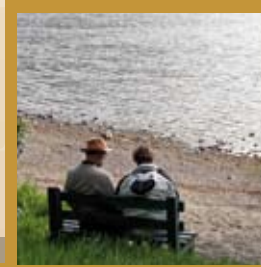




RETIREMENT THE WAY IT SHOULD BE!



INDEPENDENT LIVING UNITS



Retirement is a lifestyle and not a state you happen to find yourself in. It's an understanding, an appreciation, an acceptance and an embracing of change. Your new Village offers you your way of life just the way you intended it to be.

(Dr. A.J. Williams)

Independent Living Units are compact homes specially designed for the older person who wants to remain independent in an environment that is safe, secure and caring.

Your new compact home has a Nursing Home as part of the picture if you need it. It's your choice how you choose to use it in your new lifestyle.

Everyone can come and go as they please with visitors also welcome at all times. It's your home.

You will have other like minded home makers who are embracing the new lifestyle to socialise with. There will be a wide variety of social and recreational activities. The social centre will be the hub of the activities with a bus available for outings and shopping.

The Village is a new concept in retirement lifestyle for the over 55's. It comprises 22 compact homes in 1 and 2 bedroom layouts with kitchen/dining room, living room and shower room. Each home has an emergency call system linked to the main Nursing Home. Nursing staff are available to help, they're there now.



# RETIREMENT THE WAY IT SHOULD BE!

All the compact homes are designed to the highest specification with full interior design. It's ready for you to move in to your new lifestyle straight away. All you need is a toothbrush.

The Village is set in a tranquil landscaped garden away from the hustle and bustle with walks, seats, bowling run, putting green and a relaxing water feature.

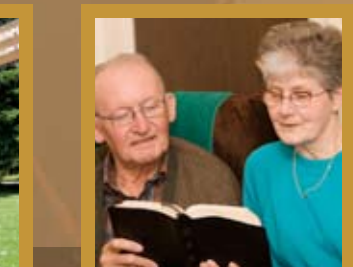
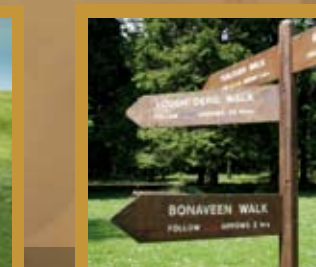
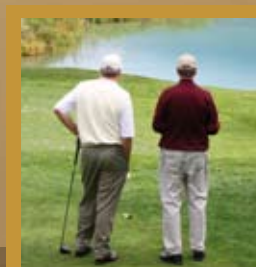
Our church will have regular mass and service for you whilst the social centre will co-ordinate and organise the shared activities or community gatherings.



## Special Features for you

- A new safe and secure lifestyle
- Caretaker for assistance and maintenance
- Permanent nurse call with continuous available full medical service access
- Direct call emergency response system to all homes
- Smoke detectors
- Closed Circuit TV in all homes for added security
- Full security system
- "Smart System" alert of any problem to Nursing Home
- Immediate and direct telephone link to Nursing Home
- Access to Village controlled with electronic gates

Portumna Retirement Village rests in a peaceful, rural environment with beautifully landscaped gardens with modern high tec. facilities.





## Assistance when you need it

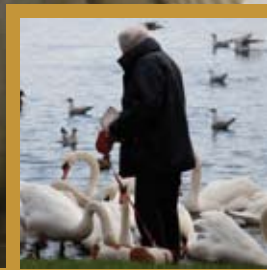
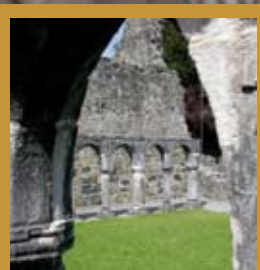
- If you need help of any kind
- Perhaps you would like some cleaning done or a meal delivered to you
- If you would like some laundry looked after or even your car washed
- If you would like some help with your shopping or like your windows cleaned
- If you feel unwell and would like to see a nurse or doctor they're there now.
- Or you just want to get involved in the social activities

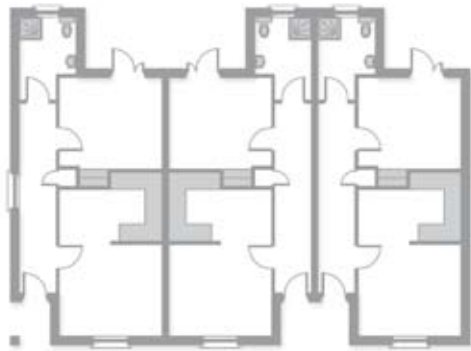
## You will always feel safe and secure at the Village

- With controlled access to your home for your safety
- With closed circuit TV at your front door
- With a personal emergency call on your person or close to hand in your new home
- With personal observation (if requested) so advanced it won't even disturb you

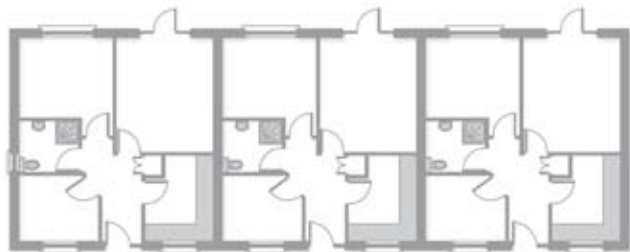
## Your independence will be fully respected

- You can come and go as you please
- You can have your own car if you like
- You can do your own shopping
- You can have visitors any time
- The staff are available to you if you need them
- You are independent of the nursing home unless you request their intervention. They're there now.





ILU Unit 1 floor plan



ILU Unit 2 floor plan

## Services available to you in your new home

Your new home can be leased on an annual fee that will depend on the level of service you choose or require.

### **PREMIER** (if you are fully independent)

- Caretaker
- Refuse collection
- Lawn cutting
- Minor maintenance
- Weekly house cleaning
- Use of Social Centre
- Closed Circuit TV
- Electronic Gate Access
- Personal Emergency Call

### **GOLD** (if you are slightly dependent)

You will have all Premier plus the following

- Direct telephone line to the Nursing Home
- Permanent Nurse on call for emergency response
- Permanent Access to Medical Emergency
- Daily Home Visit
- Daily House Keeping
- Weekly Laundry Service
- Weekly Shopping

### **PLATINUM** (if you are dependent, but independent minded)

You will have all Premier and Gold plus the following

- Daily Lunch and evening meals delivered to your home or you may prefer to dine in the restaurant
- Medication management
- Injury or wound management programmes
- Daily washing and dressing assistance
- Constant personal observation with advanced technologies that do not interfere with your daily activities

## So where is your new home

Your new home is located in the picturesque town of Portumna. Situated on Lough Derg and nestled on the border of Counties Galway and Tipperary. Within 32kms of Loughrea, Ballinasloe, Borrisokane, Nenagh, Birr, Woodford and Scarriff are also easily accessible. Large towns/cities like Galway, Limerick, Ennis and Tullamore are only 64kms away.

A bustling little town with quaint pubs and restaurants, it is bordered by the vast woodlands of Portumna Forest Park and Lough Derg. It offers you ideal leisure and entertainment facilities for both the active and passive new home maker. Whether you want to fish for the famous pike or follow the many wandering wooded walkways, Portumna has it all.

**All part of your new lifestyle  
offering you your own way of life.  
Just the way you intended it to be!**



ILU Unit 1 interior 3-D view



ILU Unit 2 interior 3-D view

Portumna Retirement Village aerial view.

# Portumna Retirement Village & ILU Site Plan

- Independent Living Units
- Nursing Home





DIGNITY SECURITY COMFORT LIFESTYLE FRIENDS FAMILY INDEPENDENT ACTIVE

Portumna Retirement Village, Portumna , Co. Galway.

T: 047 84572 F: 047 84821 E: [info@portumnaretirementvillage.com](mailto:info@portumnaretirementvillage.com)

[www.portumnaretirementvillage.com](http://www.portumnaretirementvillage.com)